



MAINE HISTORIC PRESERVATION COMMISSION  
55 CAPITOL STREET  
65 STATE HOUSE STATION  
AUGUSTA, MAINE  
04333

JOHN ELIAS BALDACCI  
GOVERNOR

EARLE G. SHETTLEWORTH, JR.  
DIRECTOR

February 16, 2007

Ms. D. Lynn Gresock  
AMEC Earth and Environmental, Inc.  
2 Robbins Road  
Westford, MA 01886

RE: (MHPC #2914-06), Kibby Wind Power project, archaeological Phase I survey

Dear Ms. Gresock:

I have reviewed the scope-of-work prepared by Dr. Richard Will, TRC, for archaeological Phase I survey for three powerline water crossings for the Kibby project. The scope is acceptable in all respects, I look forward to reviewing the report of the survey results.

Sincerely,

Dr. Arthur Spiess  
Archaeologist

cc: Richard Will

**Proposal to Conduct Phase I archaeological survey for Precontact Period Sites in the  
Proposed Kibby Wind Power Project Transmission Line Corridor  
By Richard Will, TRC, 71 Oak Street Ellsworth, ME 04605**

**Introduction**

TRC Environmental Corporation proposes to conduct a Phase I field survey for prehistoric archaeological resources within the proposed Kibby Wind Power Project, Franklin County, Maine. After a 2006 review of the Phase 0 report on this project, which was filed with the Maine Historic Preservation Commission (MHPC) in 1993 (Will 1993), Dr. Arthur Spiess of the MHPC requested field testing at three locations where the proposed transmission line for the project crosses water bodies. This proposal for a Phase I prehistoric archaeological survey includes: (1) a discussion of Phase I general methods and a scope of work; (2) a field strategy developed for this project; (3) a schedule of work completion; and (4) estimated project costs.

**General Methods and Scope of Work**

Fieldwork will entail shovel testing at three locations identified by Dr. Spiess in his recent review of the project (letter from Dr. Spiess to Ms. Lynn Gresock dated November 22, 2006). The locations include power line crossings of the North Branch of the Dead River, the South Branch of the Dead River, and Nash Stream.

The power line corridor survey area is 300 feet (91 m) wide. Shovel testholes (50 cm<sup>2</sup>) will be excavated along transects parallel to rivers and stream at intervals of 15 m. They will be excavated to culturally-sterile subsoil. All soil removed from testholes will be screened through 1/4 inch (6.4 mm) mesh to allow for recovery of small stone flakes, bones, or other cultural materials that might otherwise be missed without screening. Relevant documentation of each testhole excavated, including a soil description will be made on a standardized recording form. All cultural material will be collected for identification and analyses, as necessary.

Contingent on the recovery of cultural materials, laboratory analyses may be conducted. This will include artifact identification, qualitative and quantitative manipulation of data, cleaning, cataloging, and photographing artifacts. Completion time will vary depending on the quantity of archaeological material recovered. The final report will comply with guidelines issued by the SHPO and will include, but not be limited to: a description of the environment of the project area; a research design discussing rationale, goals, methods and results; a discussion

of the importance of the area to state prehistory, relevance to archaeological research, and expected site potential of the area; and, results and recommendations. Graphics will include maps of all testhole locations and the location of any sites discovered. Black and white photographs will be included as deemed necessary.

### **Field Strategy**

The field strategy proposed for the project is based on an inspection of U.S.G.S. topographic maps (scale: 1:24,000) and documentation supplied by Ms. Lynn Gresock of AMEC Earth and Environmental, Inc. An estimated 54 testholes will be sufficient to sample the water crossings. This is based on the assumption that a maximum of 18 testholes (6 testholes on both sides of the waterbody) are required. Modifications to the proposed field strategy may be necessary on field inspection. Any significant modification to the field strategy proposed in this document will be made in consultation with Ms. Gresock and Dr. Spiess. There may be some logistical issues in accessing the crossings. These will be coordinated with Ms. Gresock before fieldwork commences.

### **Schedule for Work Completion**

Fieldwork will be performed by a two-person team and one supervisor and will take approximately four days to complete. The work will be completed as soon as ground conditions permit. The estimated date for fieldwork is on or before May 1, 2007.

### **Estimated Project Costs**

An Excel spread sheet is attached.

### **Reference Cited**

Will, R. T.

1993 Report on Phase 0 Archaeological Survey of the New England Wind Energy Station. Report on file with the Maine Historic Preservation Commission, Augusta.



November 15, 2006

Dr. Arthur Speiss  
Maine Historic Preservation Commission  
55 Capital Street  
State House Station 65  
Augusta, Maine 04333

**Subject: Request for Review – Kibby Wind Power Project**

Dear Dr. Speiss:

This letter is to request your review of the proposed Kibby Wind Power Project to determine the need for any additional historic or archaeological investigations. The project is an approximately 130 megawatt windpower facility located in Kibby and Skinner Townships, Franklin County. Rezoning and permit review will be required for the project by the Land Use Regulation Commission. The site is a smaller subset of the location where a wind project was proposed and reviewed by your office in the early 1990s. Figure 1 illustrates the proposed location of the Kibby Wind Power Project and its associated transmission line, along with the location of the former project as a frame of reference.

A Phase 0 survey for PreContact period archaeological sites was previously conducted in this area in 1993 for the proposed New England Wind Energy Station (also known as the Kenetech or U.S. Windpower project) by Richard Will, PhD (MHPC report #2757). No archaeological sites were reported in the vicinity of that project area and field reconnaissance indicated that the area had low archaeological sensitivity for PreContact period sites. Site files for the Kibby Wind Power Project were re-examined by Dr. Richard Will on August 12, 2005 to determine whether any new archaeological site data had been gathered from the area; no additional information was identified at that time.

As you can see from Figure 1, the Kibby Wind Power Project largely overlaps with a portion of the former wind project proposed more than a decade ago. We believe, given the prior review, that no further studies are warranted for historical or archaeological resources in the project area. We would appreciate your review of this information to confirm this assumption or to direct us with regard to potential issues requiring further study.

Please let me know (978-692-9090, ext. 366; [lynn.gresock@amec.com](mailto:lynn.gresock@amec.com)) if you require additional information to complete your review. We look forward to your response.

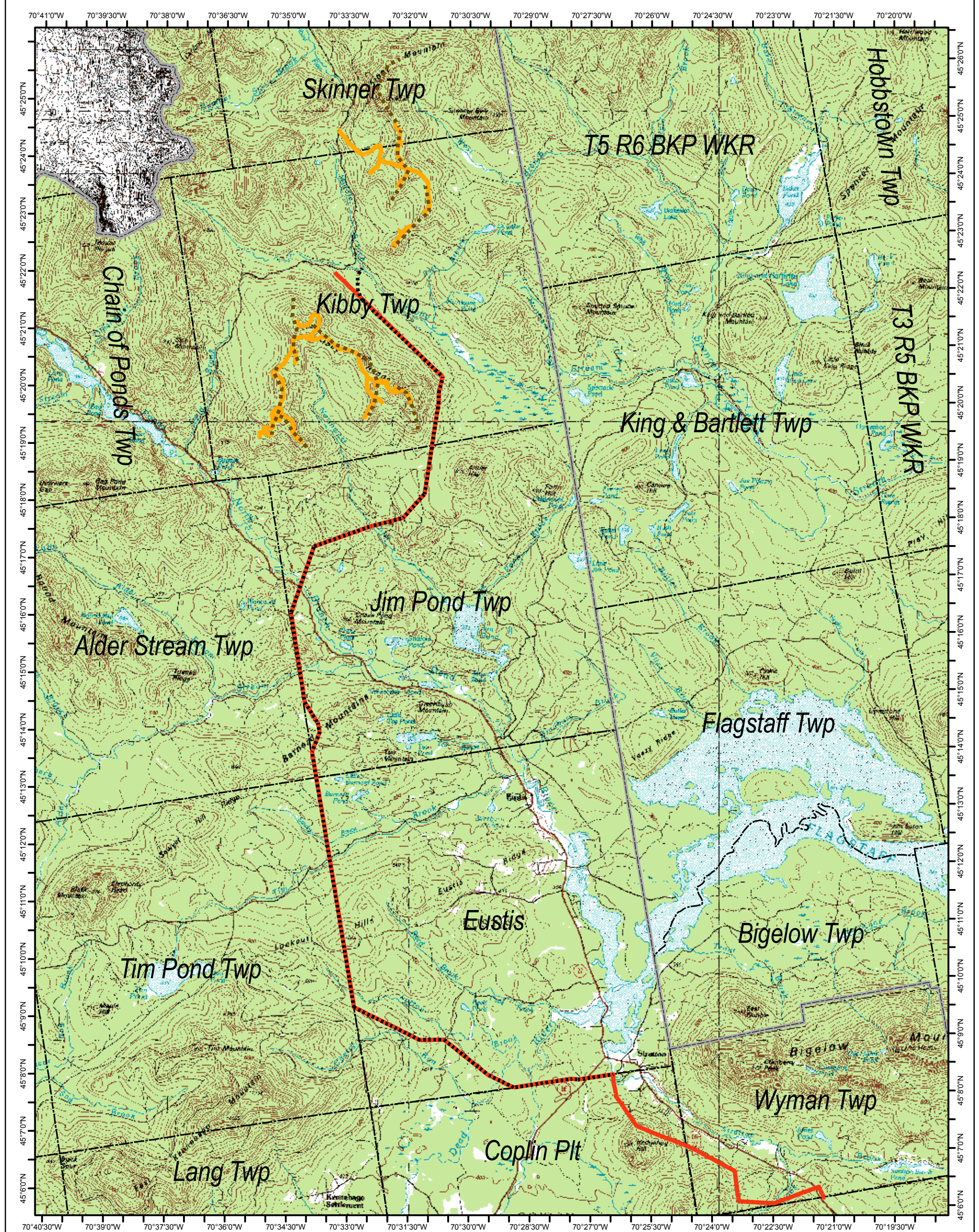
Very truly yours,

**AMEC Earth & Environmental, Inc.**

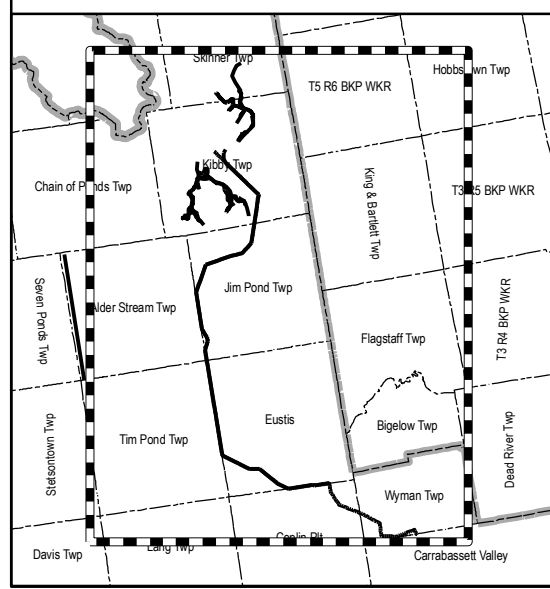
A handwritten signature in black ink that reads "Lynn Gresock". The signature is written in a cursive, flowing style.

D. Lynn Gresock  
Environmental Consultant

AMEC Earth & Environmental, Inc.  
2 Robbins Road  
Westford, MA 01886  
Phone: 978.692.9090  
Fax: 978.692.6633  
[www.amec.com](http://www.amec.com)



Base map: USGS 100k Topographic Map. Coordinate Grid: NAD83



**Legend**

- Kibby Proposed Wind Turbine Area
- Kibby Proposed Transmission Line
- - - Kenetech Proposed Wind Turbine Area
- - - - - Kenetech Proposed Transmission Line

Notes: This figure represents the approximate location of the proposed Kibby Wind Power Project as of 11-15-06.



5

Miles



249 Western Ave  
Augusta, ME 04330

**Kibby Wind Power Project  
Proposed Work Areas Compared  
to Former Kenetech Project**

Figure: 1

INFORMATION DEPICTED HEREON IS FOR REFERENCE PURPOSES ONLY AND IS COMPILED FROM BEST AVAILABLE SOURCES. EPRO Engineering and Environmental Consulting, LLC ASSUMES NO RESPONSIBILITY FOR ERRORS ARISING FROM MISUSE OF THIS MAP.



November 15, 2006

Brenda Commander, Chief  
Houton Band of Maliseet Indians  
88 Bell Road  
Littleton, Maine 04730

**Subject: Request for Review – Kibby Wind Power Project**

Dear Chief Commander:

This letter is to request your review of the proposed Kibby Wind Power Project to determine the need for any additional historic or archaeological investigations. The project is an approximately 130 megawatt windpower facility located in Kibby and Skinner Townships, Franklin County. Rezoning and permit review will be required for the project by the Land Use Regulation Commission. The site is a smaller subset of the location where a wind project was proposed and reviewed by your office in the early 1990s. Figure 1 illustrates the proposed location of the Kibby Wind Power Project and its associated transmission line, along with the location of the former project as a frame of reference.

A Phase 0 survey for PreContact period archaeological sites was previously conducted in this area in 1993 for the proposed New England Wind Energy Station (also known as the Kenetech or U.S. Windpower project) by Richard Will, PhD (MHPC report #2757). No archaeological sites were reported in the vicinity of that project area and field reconnaissance indicated that the area had low archaeological sensitivity for PreContact period sites. Site files for the Kibby Wind Power Project were re-examined by Dr. Richard Will on August 12, 2005 to determine whether any new archaeological site data had been gathered from the area; no additional information was identified at that time.

As you can see from Figure 1, the Kibby Wind Power Project largely overlaps with a portion of the former wind project proposed more than a decade ago. We believe, given the prior review, that no further studies are warranted for historical or archaeological resources in the project area. We would appreciate your review of this information to confirm this assumption or to direct us with regard to potential tribal issues requiring further study.

Please let me know (978-692-9090, ext. 366; [lynn.gresock@amec.com](mailto:lynn.gresock@amec.com)) if you require additional information to complete your review. We look forward to your response.

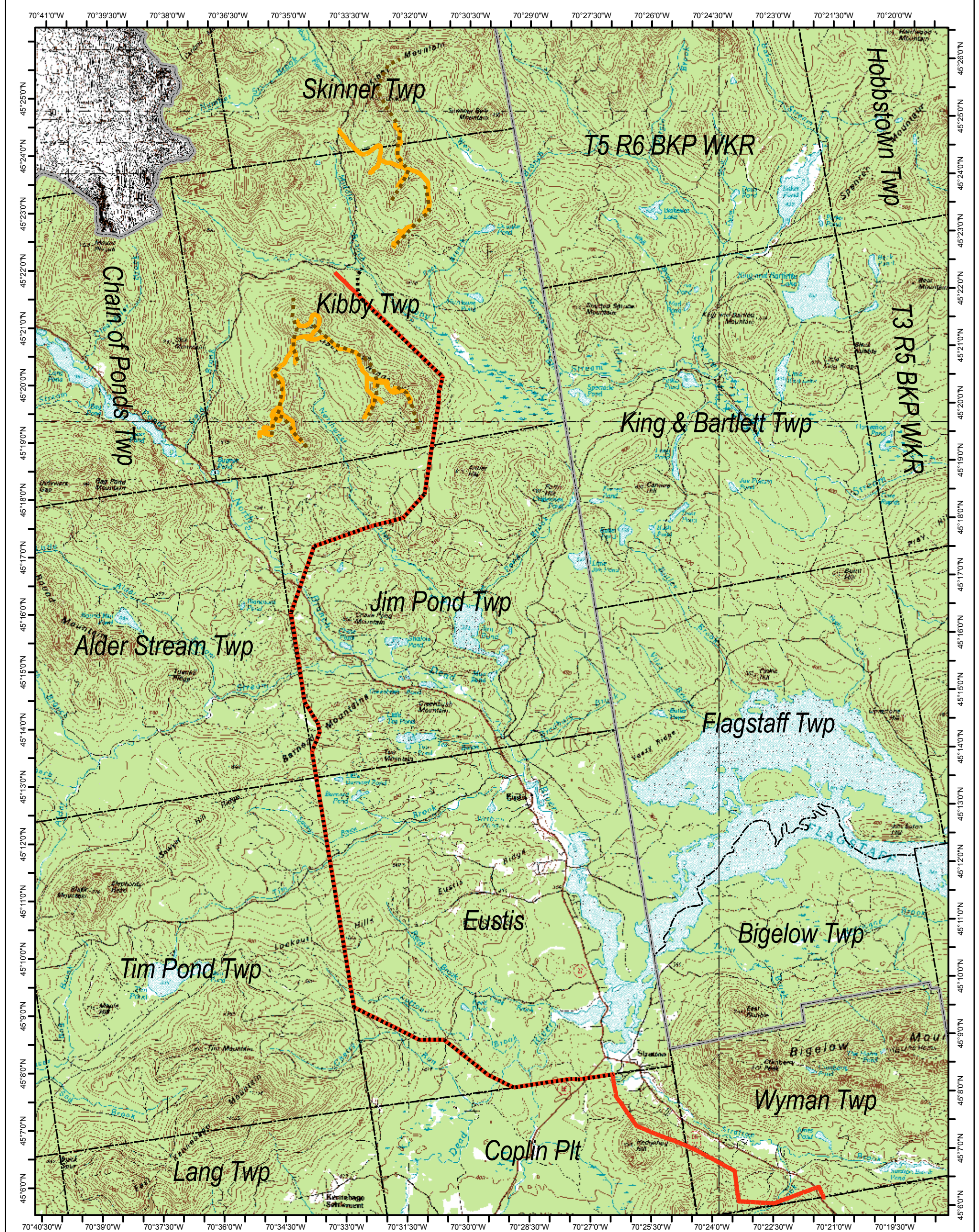
Very truly yours,

**AMEC Earth & Environmental, Inc.**

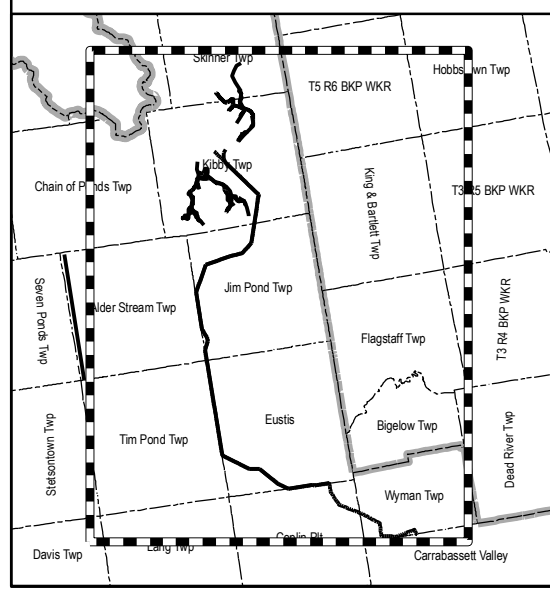
A handwritten signature in black ink that reads "Lynn Gresock".

D. Lynn Gresock  
Environmental Consultant

[AMEC Earth & Environmental, Inc.](http://www.amec.com)  
2 Robbins Road  
Westford, MA 01886  
Phone: 978.692.9090  
Fax: 978.692.6633  
[www.amec.com](http://www.amec.com)



Base map: USGS 100k Topographic Map. Coordinate Grid: NAD83



**Legend**

- Kibby Proposed Wind Turbine Area
- Kibby Proposed Transmission Line
- - - Kenetech Proposed Wind Turbine Area
- - - - - Kenetech Proposed Transmission Line

Notes: This figure represents the approximate location of the proposed Kibby Wind Power Project as of 11-15-06.



5

Miles



249 Western Ave  
Augusta, ME 04330

**Kibby Wind Power Project  
Proposed Work Areas Compared  
to Former Kenetech Project**

Figure: 1

INFORMATION DEPICTED HEREON IS FOR REFERENCE PURPOSES ONLY AND IS COMPILED FROM BEST AVAILABLE SOURCES. EPRO Engineering and Environmental Consulting, LLC ASSUMES NO RESPONSIBILITY FOR ERRORS ARISING FROM MISUSE OF THIS MAP.



November 15, 2006

Sharri Venno, Environmental Planner  
Houton Band of Maliseet Indians  
88 Bell Road  
Littleton, Maine 04730

**Subject: Request for Review – Kibby Wind Power Project**

Dear Ms. Venno:

This letter is to request your review of the proposed Kibby Wind Power Project to determine the need for any additional historic or archaeological investigations. The project is an approximately 130 megawatt windpower facility located in Kibby and Skinner Townships, Franklin County. Rezoning and permit review will be required for the project by the Land Use Regulation Commission. The site is a smaller subset of the location where a wind project was proposed and reviewed by your office in the early 1990s. Figure 1 illustrates the proposed location of the Kibby Wind Power Project and its associated transmission line, along with the location of the former project as a frame of reference.

A Phase 0 survey for PreContact period archaeological sites was previously conducted in this area in 1993 for the proposed New England Wind Energy Station (also known as the Kenetech or U.S. Windpower project) by Richard Will, PhD (MHPC report #2757). No archaeological sites were reported in the vicinity of that project area and field reconnaissance indicated that the area had low archaeological sensitivity for PreContact period sites. Site files for the Kibby Wind Power Project were re-examined by Dr. Richard Will on August 12, 2005 to determine whether any new archaeological site data had been gathered from the area; no additional information was identified at that time.

As you can see from Figure 1, the Kibby Wind Power Project largely overlaps with a portion of the former wind project proposed more than a decade ago. We believe, given the prior review, that no further studies are warranted for historical or archaeological resources in the project area. We would appreciate your review of this information to confirm this assumption or to direct us with regard to potential tribal issues requiring further study.

Please let me know (978-692-9090, ext. 366; [lynn.gresock@amec.com](mailto:lynn.gresock@amec.com)) if you require additional information to complete your review. We look forward to your response.

Very truly yours,

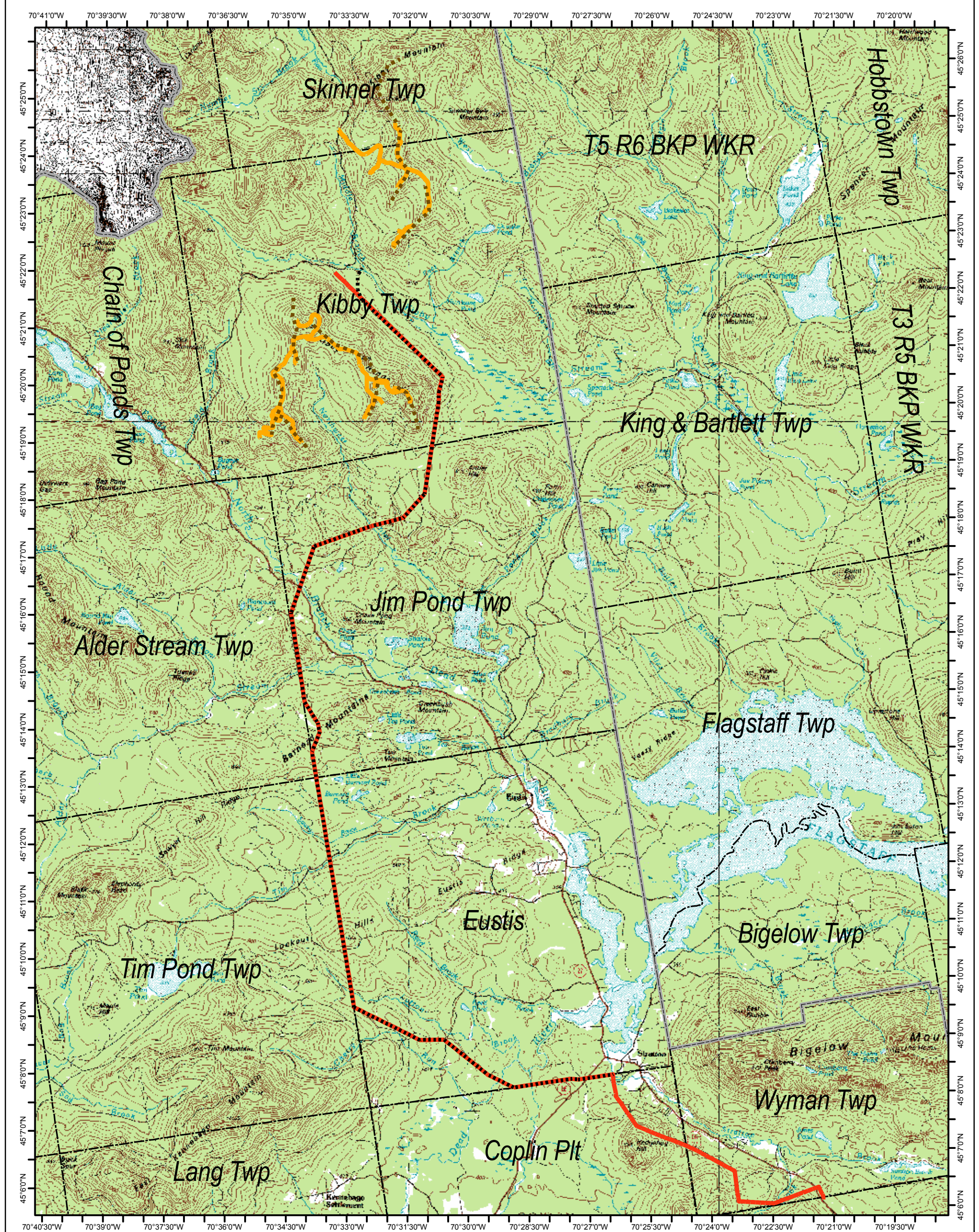
**AMEC Earth & Environmental, Inc.**

A handwritten signature in black ink that reads "Lynn Gresock". The signature is written in a cursive, flowing style.

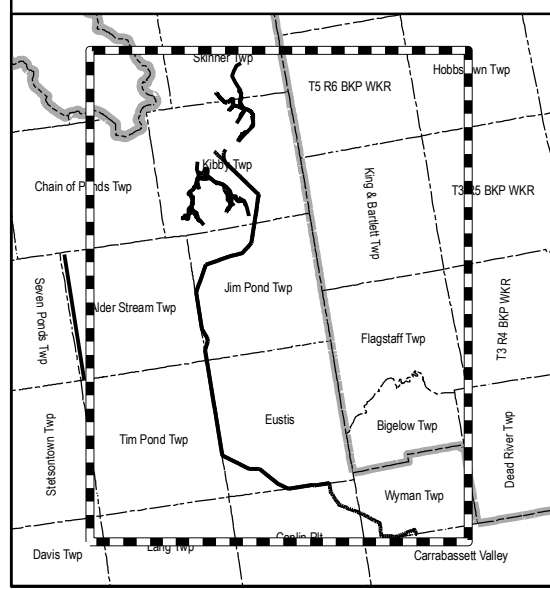
D. Lynn Gresock  
Environmental Consultant

AMEC Earth & Environmental, Inc.  
2 Robbins Road  
Westford, MA 01886  
Phone: 978.692.9090  
Fax: 978.692.6633  
[www.amec.com](http://www.amec.com)





Base map: USGS 100k Topographic Map. Coordinate Grid: NAD83



**Legend**

- Kibby Proposed Wind Turbine Area
- Kibby Proposed Transmission Line
- - - Kenetech Proposed Wind Turbine Area
- - - - - Kenetech Proposed Transmission Line

Notes: This figure represents the approximate location of the proposed Kibby Wind Power Project as of 11-15-06.



5

Miles



249 Western Ave  
Augusta, ME 04330

**Kibby Wind Power Project  
Proposed Work Areas Compared  
to Former Kenetech Project**

INFORMATION DEPICTED HEREON IS FOR REFERENCE PURPOSES ONLY AND IS COMPILED FROM BEST AVAILABLE SOURCES. EPRO Engineering and Environmental Consulting, LLC ASSUMES NO RESPONSIBILITY FOR ERRORS ARISING FROM MISUSE OF THIS MAP.

Figure: 1



November 15, 2006

William Phillips Jr., Chief  
Aroostook Band of Micmac Indians  
7 Northern Road  
Presque Isle, Maine 04769

**Subject: Request for Review – Kibby Wind Power Project**

Dear Chief Phillips:

This letter is to request your review of the proposed Kibby Wind Power Project to determine the need for any additional historic or archaeological investigations. The project is an approximately 130 megawatt windpower facility located in Kibby and Skinner Townships, Franklin County. Rezoning and permit review will be required for the project by the Land Use Regulation Commission. The site is a smaller subset of the location where a wind project was proposed and reviewed by your office in the early 1990s. Figure 1 illustrates the proposed location of the Kibby Wind Power Project and its associated transmission line, along with the location of the former project as a frame of reference.

A Phase 0 survey for PreContact period archaeological sites was previously conducted in this area in 1993 for the proposed New England Wind Energy Station (also known as the Kenetech or U.S. Windpower project) by Richard Will, PhD (MHPC report #2757). No archaeological sites were reported in the vicinity of that project area and field reconnaissance indicated that the area had low archaeological sensitivity for PreContact period sites. Site files for the Kibby Wind Power Project were re-examined by Dr. Richard Will on August 12, 2005 to determine whether any new archaeological site data had been gathered from the area; no additional information was identified at that time.

As you can see from Figure 1, the Kibby Wind Power Project largely overlaps with a portion of the former wind project proposed more than a decade ago. We believe, given the prior review, that no further studies are warranted for historical or archaeological resources in the project area. We would appreciate your review of this information to confirm this assumption or to direct us with regard to potential tribal issues requiring further study.

Please let me know (978-692-9090, ext. 366; [lynn.gresock@amec.com](mailto:lynn.gresock@amec.com)) if you require additional information to complete your review. We look forward to your response.

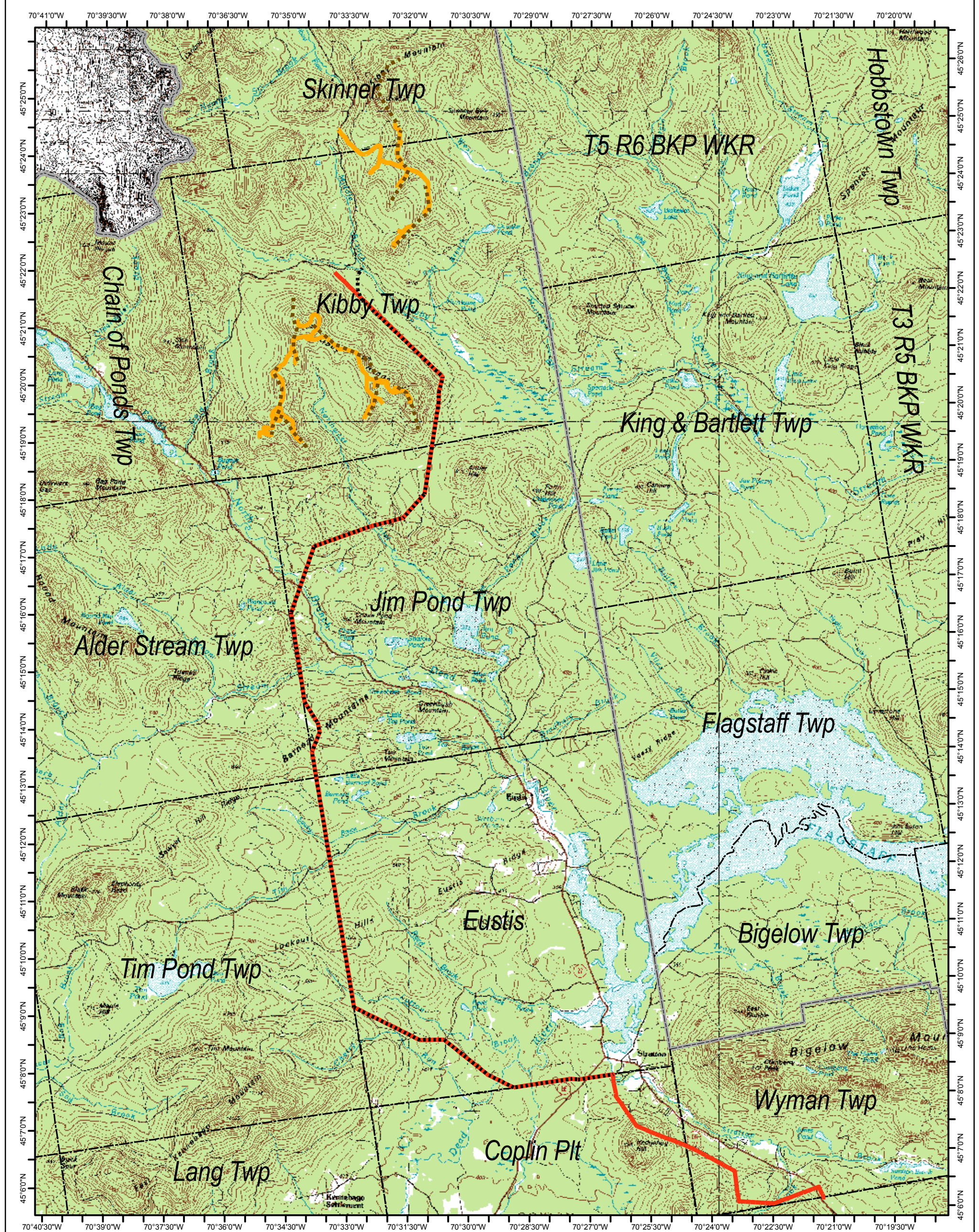
Very truly yours,

**AMEC Earth & Environmental, Inc.**

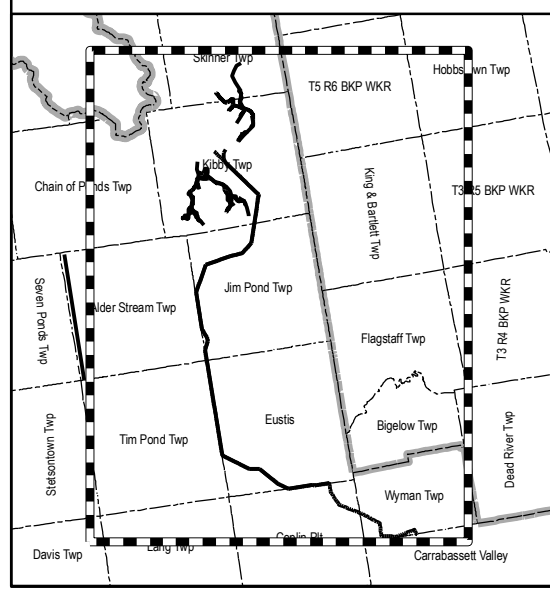
A handwritten signature in black ink that reads "Lynn Gresock". The signature is written in a cursive, flowing style.

D. Lynn Gresock  
Environmental Consultant

AMEC Earth & Environmental, Inc.  
2 Robbins Road  
Westford, MA 01886  
Phone: 978.692.9090  
Fax: 978.692.6633  
[www.amec.com](http://www.amec.com)



Base map: USGS 100k Topographic Map. Coordinate Grid: NAD83



**Legend**

- Kibby Proposed Wind Turbine Area
- Kibby Proposed Transmission Line
- - - Kenetech Proposed Wind Turbine Area
- - - - Kenetech Proposed Transmission Line

Notes: This figure represents the approximate location of the proposed Kibby Wind Power Project as of 11-15-06.



5

Miles



249 Western Ave  
Augusta, ME 04330

**Kibby Wind Power Project  
Proposed Work Areas Compared  
to Former Kenetech Project**

Figure: 1

INFORMATION DEPICTED HEREON IS FOR REFERENCE PURPOSES ONLY AND IS COMPILED FROM BEST AVAILABLE SOURCES. EPRO Engineering and Environmental Consulting, LLC ASSUMES NO RESPONSIBILITY FOR ERRORS ARISING FROM MISUSE OF THIS MAP.



November 15, 2006

Fred Corey, Natural Resources Director  
Aroostook Band of Micmac Indians  
7 Northern Road  
Presque Isle, Maine 04769

**Subject: Request for Review – Kibby Wind Power Project**

Dear Mr. Corey:

This letter is to request your review of the proposed Kibby Wind Power Project to determine the need for any additional historic or archaeological investigations. The project is an approximately 130 megawatt windpower facility located in Kibby and Skinner Townships, Franklin County. Rezoning and permit review will be required for the project by the Land Use Regulation Commission. The site is a smaller subset of the location where a wind project was proposed and reviewed by your office in the early 1990s. Figure 1 illustrates the proposed location of the Kibby Wind Power Project and its associated transmission line, along with the location of the former project as a frame of reference.

A Phase 0 survey for PreContact period archaeological sites was previously conducted in this area in 1993 for the proposed New England Wind Energy Station (also known as the Kenetech or U.S. Windpower project) by Richard Will, PhD (MHPC report #2757). No archaeological sites were reported in the vicinity of that project area and field reconnaissance indicated that the area had low archaeological sensitivity for PreContact period sites. Site files for the Kibby Wind Power Project were re-examined by Dr. Richard Will on August 12, 2005 to determine whether any new archaeological site data had been gathered from the area; no additional information was identified at that time.

As you can see from Figure 1, the Kibby Wind Power Project largely overlaps with a portion of the former wind project proposed more than a decade ago. We believe, given the prior review, that no further studies are warranted for historical or archaeological resources in the project area. We would appreciate your review of this information to confirm this assumption or to direct us with regard to potential tribal issues requiring further study.

Please let me know (978-692-9090, ext. 366; [lynn.gresock@amec.com](mailto:lynn.gresock@amec.com)) if you require additional information to complete your review. We look forward to your response.

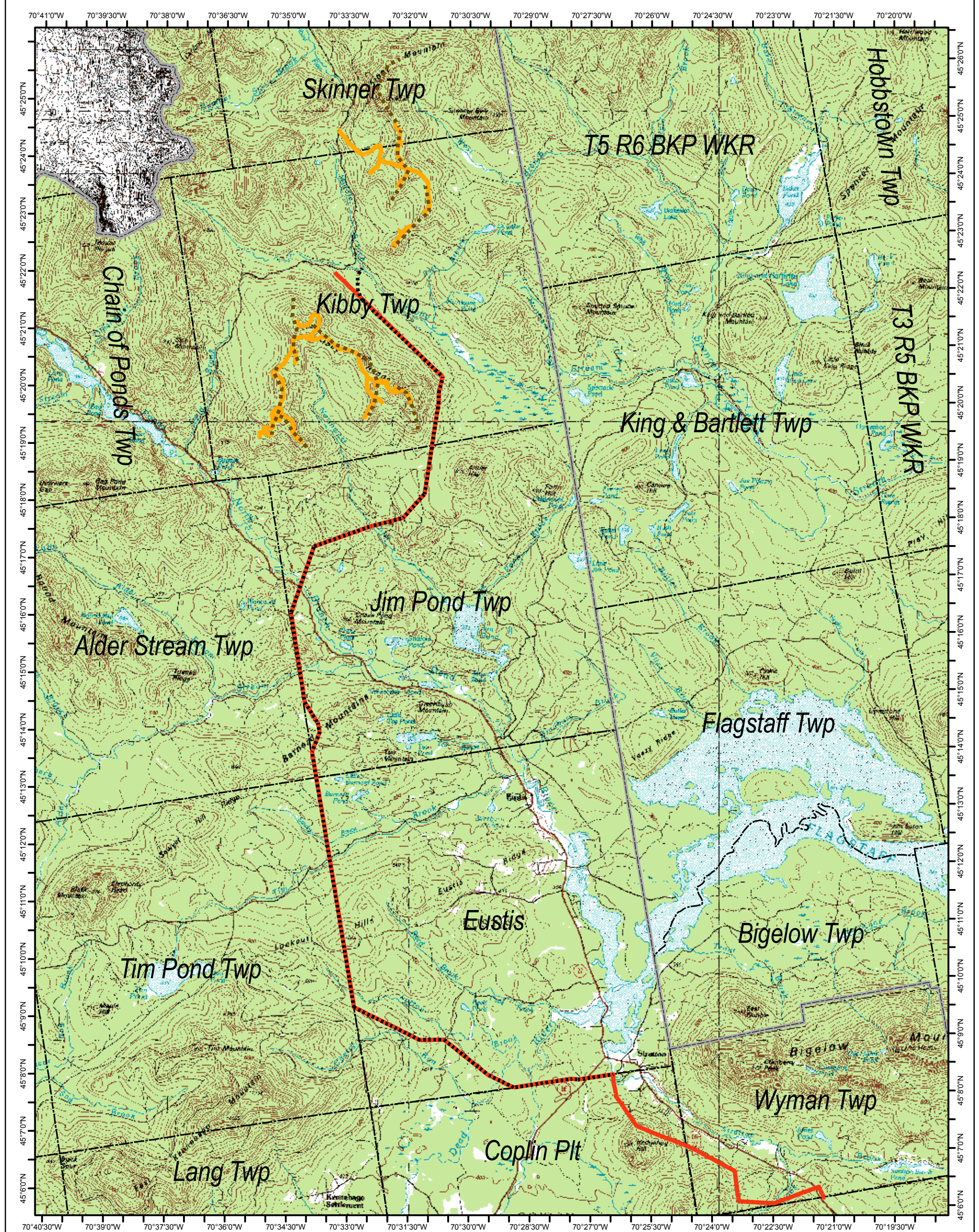
Very truly yours,

**AMEC Earth & Environmental, Inc.**

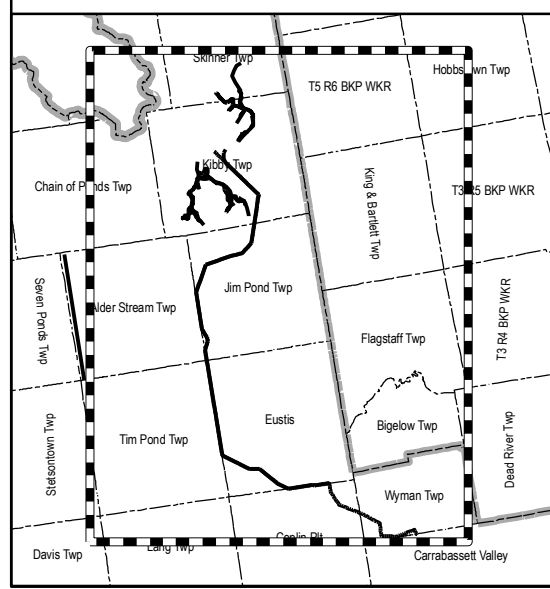
A handwritten signature in black ink that reads "Lynn Gresock".

D. Lynn Gresock  
Environmental Consultant

[AMEC Earth & Environmental, Inc.](http://www.amec.com)  
2 Robbins Road  
Westford, MA 01886  
Phone: 978.692.9090  
Fax: 978.692.6633  
[www.amec.com](http://www.amec.com)



Base map: USGS 100k Topographic Map. Coordinate Grid: NAD83



**Legend**

- Kibby Proposed Wind Turbine Area
- Kibby Proposed Transmission Line
- - - Kenetech Proposed Wind Turbine Area
- - - - - Kenetech Proposed Transmission Line

Notes: This figure represents the approximate location of the proposed Kibby Wind Power Project as of 11-15-06.



5

Miles



249 Western Ave  
Augusta, ME 04330

**Kibby Wind Power Project  
Proposed Work Areas Compared  
to Former Kenetech Project**

INFORMATION DEPICTED HEREON IS FOR REFERENCE PURPOSES ONLY AND IS COMPILED FROM BEST AVAILABLE SOURCES. EPRO Engineering and Environmental Consulting, LLC ASSUMES NO RESPONSIBILITY FOR ERRORS ARISING FROM MISUSE OF THIS MAP.

Figure: 1



November 15, 2006

Donald Soctomah  
THPO  
Passamaquoddy Tribe  
P.O. Box 159  
Princeton, Maine 04668

**Subject: Request for Review – Kibby Wind Power Project**

Dear Mr. Soctomah:

This letter is to request your review of the proposed Kibby Wind Power Project to determine the need for any additional historic or archaeological investigations. The project is an approximately 130 megawatt windpower facility located in Kibby and Skinner Townships, Franklin County. Rezoning and permit review will be required for the project by the Land Use Regulation Commission. The site is a smaller subset of the location where a wind project was proposed and reviewed by your office in the early 1990s. Figure 1 illustrates the proposed location of the Kibby Wind Power Project and its associated transmission line, along with the location of the former project as a frame of reference.

A Phase 0 survey for PreContact period archaeological sites was previously conducted in this area in 1993 for the proposed New England Wind Energy Station (also known as the Kenetech or U.S. Windpower project) by Richard Will, PhD (MHPC report #2757). No archaeological sites were reported in the vicinity of that project area and field reconnaissance indicated that the area had low archaeological sensitivity for PreContact period sites. Site files for the Kibby Wind Power Project were re-examined by Dr. Richard Will on August 12, 2005 to determine whether any new archaeological site data had been gathered from the area; no additional information was identified at that time.

As you can see from Figure 1, the Kibby Wind Power Project largely overlaps with a portion of the former wind project proposed more than a decade ago. We believe, given the prior review, that no further studies are warranted for historical or archaeological resources in the project area. We would appreciate your review of this information to confirm this assumption or to direct us with regard to potential tribal issues requiring further study.

Please let me know (978-692-9090, ext. 366; [lynn.gresock@amec.com](mailto:lynn.gresock@amec.com)) if you require additional information to complete your review. We look forward to your response.

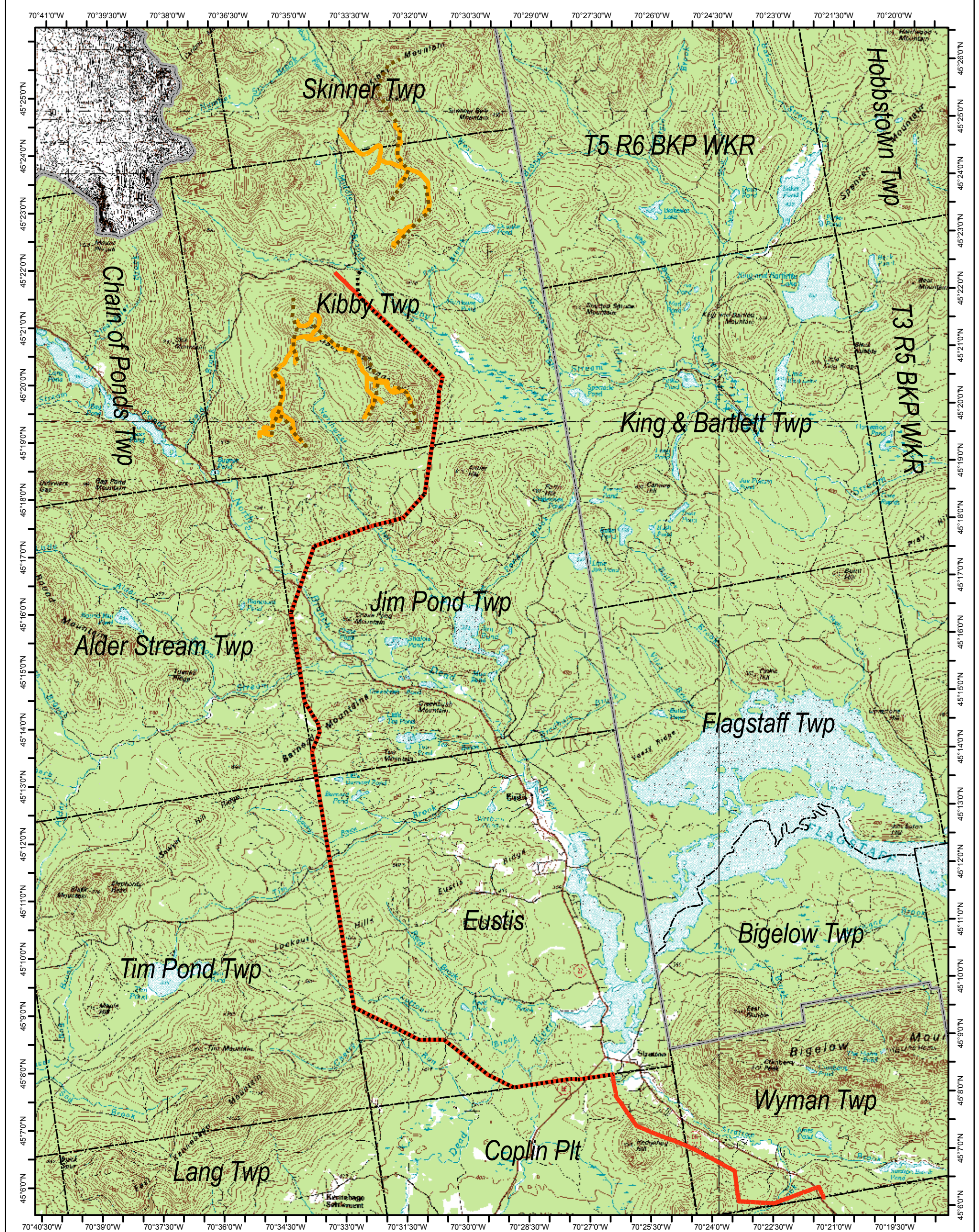
Very truly yours,

**AMEC Earth & Environmental, Inc.**

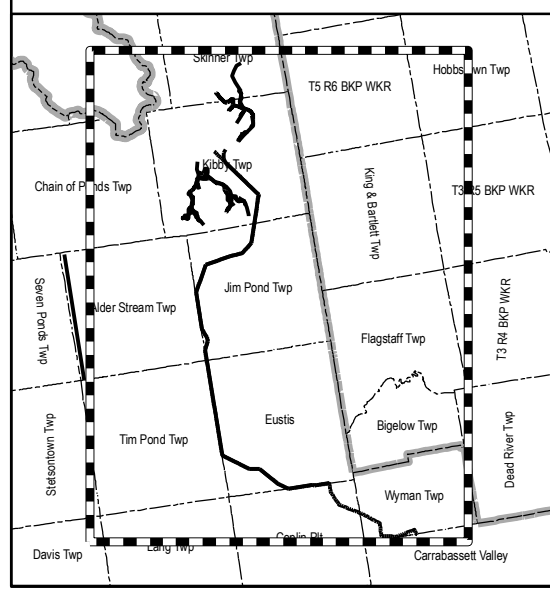
A handwritten signature in black ink that reads "Lynn Gresock". The signature is written in a cursive, flowing style.

D. Lynn Gresock  
Environmental Consultant

AMEC Earth & Environmental, Inc.  
2 Robbins Road  
Westford, MA 01886  
Phone: 978.692.9090  
Fax: 978.692.6633  
[www.amec.com](http://www.amec.com)



Base map: USGS 100k Topographic Map, Coordinate Grid: NAD83



**Legend**

- Kibby Proposed Wind Turbine Area
- Kibby Proposed Transmission Line
- - - Kenetech Proposed Wind Turbine Area
- - - - Kenetech Proposed Transmission Line

Notes: This figure represents the approximate location of the proposed Kibby Wind Power Project as of 11-15-06.



5

Miles



249 Western Ave  
Augusta, ME 04330

**Kibby Wind Power Project  
Proposed Work Areas Compared  
to Former Kenetech Project**

Figure: 1

INFORMATION DEPICTED HEREON IS FOR REFERENCE PURPOSES ONLY AND IS COMPILED FROM BEST AVAILABLE SOURCES. EPRO Engineering and Environmental Consulting, LLC ASSUMES NO RESPONSIBILITY FOR ERRORS ARISING FROM MISUSE OF THIS MAP.



November 15, 2006

Bonnie Newsome  
THPO  
Penobscot Nation  
12 Wabenaki Way  
Indian Island, Maine 04468

**Subject: Request for Review – Kibby Wind Power Project**

Dear Ms. Newsome:

This letter is to request your review of the proposed Kibby Wind Power Project to determine the need for any additional historic or archaeological investigations. The project is an approximately 130 megawatt windpower facility located in Kibby and Skinner Townships, Franklin County. Rezoning and permit review will be required for the project by the Land Use Regulation Commission. The site is a smaller subset of the location where a wind project was proposed and reviewed by your office in the early 1990s. Figure 1 illustrates the proposed location of the Kibby Wind Power Project and its associated transmission line, along with the location of the former project as a frame of reference.

A Phase 0 survey for PreContact period archaeological sites was previously conducted in this area in 1993 for the proposed New England Wind Energy Station (also known as the Kenetech or U.S. Windpower project) by Richard Will, PhD (MHPC report #2757). No archaeological sites were reported in the vicinity of that project area and field reconnaissance indicated that the area had low archaeological sensitivity for PreContact period sites. Site files for the Kibby Wind Power Project were re-examined by Dr. Richard Will on August 12, 2005 to determine whether any new archaeological site data had been gathered from the area; no additional information was identified at that time.

As you can see from Figure 1, the Kibby Wind Power Project largely overlaps with a portion of the former wind project proposed more than a decade ago. We believe, given the prior review, that no further studies are warranted for historical or archaeological resources in the project area. We would appreciate your review of this information to confirm this assumption or to direct us with regard to potential tribal issues requiring further study.

Please let me know (978-692-9090, ext. 366; [lynn.gresock@amec.com](mailto:lynn.gresock@amec.com)) if you require additional information to complete your review. We look forward to your response.

Very truly yours,

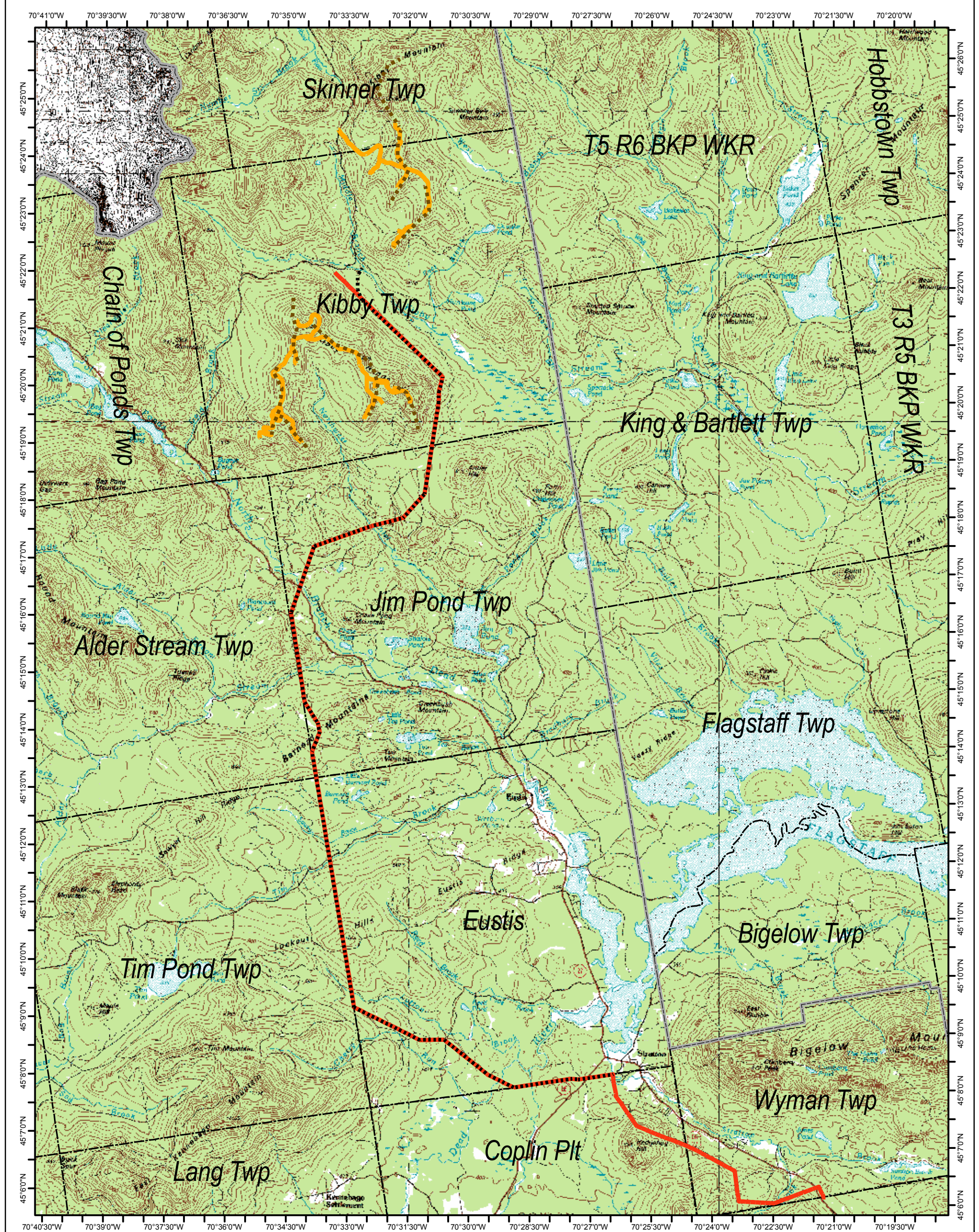
**AMEC Earth & Environmental, Inc.**

A handwritten signature in cursive script that reads "Lynn Gresock".

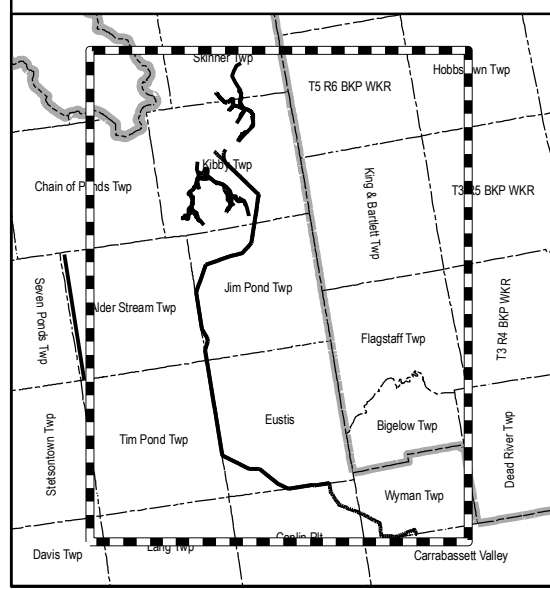
D. Lynn Gresock  
Environmental Consultant

AMEC Earth & Environmental, Inc.  
2 Robbins Road  
Westford, MA 01886  
Phone: 978.692.9090  
Fax: 978.692.6633  
[www.amec.com](http://www.amec.com)





Base map: USGS 100k Topographic Map. Coordinate Grid: NAD83



**Legend**

- Kibby Proposed Wind Turbine Area
- Kibby Proposed Transmission Line
- - - Kenetech Proposed Wind Turbine Area
- - - - Kenetech Proposed Transmission Line

Notes: This figure represents the approximate location of the proposed Kibby Wind Power Project as of 11-15-06.



5

Miles



249 Western Ave  
Augusta, ME 04330

**Kibby Wind Power Project  
Proposed Work Areas Compared  
to Former Kenetech Project**

Figure: 1

INFORMATION DEPICTED HEREON IS FOR REFERENCE PURPOSES ONLY AND IS COMPILED FROM BEST AVAILABLE SOURCES. EPRO Engineering and Environmental Consulting, LLC ASSUMES NO RESPONSIBILITY FOR ERRORS ARISING FROM MISUSE OF THIS MAP.



MAINE HISTORIC PRESERVATION COMMISSION  
55 CAPITOL STREET  
65 STATE HOUSE STATION  
AUGUSTA, MAINE  
04333

JOHN ELIAS BALDACCI  
GOVERNOR

EARLE G. SHETTLEWORTH, JR.  
DIRECTOR

November 22, 2006

Ms. D. Lynn Grescok  
AMEC Earth and Environmental, Inc.  
2 Robbins Road  
Westford, MA 01886

re: Kibby Wind Power project, archaeology

Dear Ms. Gresock:

Thank you for pointing out Dr. Richard Will's 1993 "Phase 0" archaeological study of the proposed Kenetech/New England Wind Energy project, and how closely the Kibby design falls within the areas proposed for the former project. I have re-read Dr. Will's report carefully.

We concur that further archaeological survey work is not necessary for the proposed Kibby wind turbine areas and associated access roads.

However, the power transmission lines require a modest amount of further archaeological survey field work (testpit excavation). So, we do not concur that no further studies are warranted. Based on a close reading of pages II.V.-12 and 13 of Dr. Will's report, and our experience in the last decade with the direct and indirect impacts generated by other powerline construction projects and powerline maintenance, three areas of the powerline require Phase I level (testpit excavation) archaeological fieldwork: 1) the powerline crossing of the North Branch Dead River; 2) the relatively level area around Reed Brook (possible post-glacial lake basin), and 3) the South Branch Dead River crossing. Dr. Will's report indicates that they did not find any evidence of archaeological sites in these areas, but he does not state that the survey in these areas was comprehensive. And, in fact, it was not. We require systematic testpit excavation within the powerline corridor at these crossings.

Sincerely,

Dr. Arthur Spiess  
Senior Archaeologist

[arthur.spiess@maine.gov](mailto:arthur.spiess@maine.gov)



PRINTED ON RECYCLED PAPER



**PENOBSCOT INDIAN NATION**  
**BONNIE NEWSOM - ARCHAEOLOGY DEPARTMENT**  
**12 WABANAKI WAY, INDIAN ISLAND, ME 04468**  
**E-MAIL: [bnewsom@penobscotnation.org](mailto:bnewsom@penobscotnation.org) Fax: 207-817-7463**

<b>NAME</b>	D. Lynn Gresock Environmental Consultant
<b>ADDRESS</b>	AMEC Earth & Environmental, Inc. 2 Robbins Road Westford, MA 01886
<b>OWNER'S NAME</b>	TansCanada Maine Wind Energy Ltd.
<b>TELEPHONE</b>	(978) 692-9090
<b>FAX</b>	(978) 692-6633
<b>EMAIL</b>	<a href="mailto:lynn.gresock@amec.com">lynn.gresock@amec.com</a>
<b>PROJECT NAME</b>	Kibby Wind Power Project
<b>PROJECT SITE</b>	Kibby and Skinner Townships Franklin County, ME
<b>DATE OF REQUEST</b>	November 15, 2006
<b>DATE REVIEWED</b>	December 13, 2006

Thank you for the opportunity to comment on the above referenced project. This project appears to have no impact on a structure or site of historic, architectural or archaeological significance to the Penobscot Nation as defined by the National Historic Preservation Act of 1966, and subsequent updates.

Also, if Native American cultural materials are encountered during the course of the project, please contact me at (207) 817-7332. Thank you.

*BONNIE NEWSOM, THPO*  
Penobscot Nation